

4t30m electric hydraulic telescopic boom marine crane for offshore service vessel

4t30m electric hydraulic telescopic boom marine crane for offshore service vessel

BRIEF INTRODUCTION

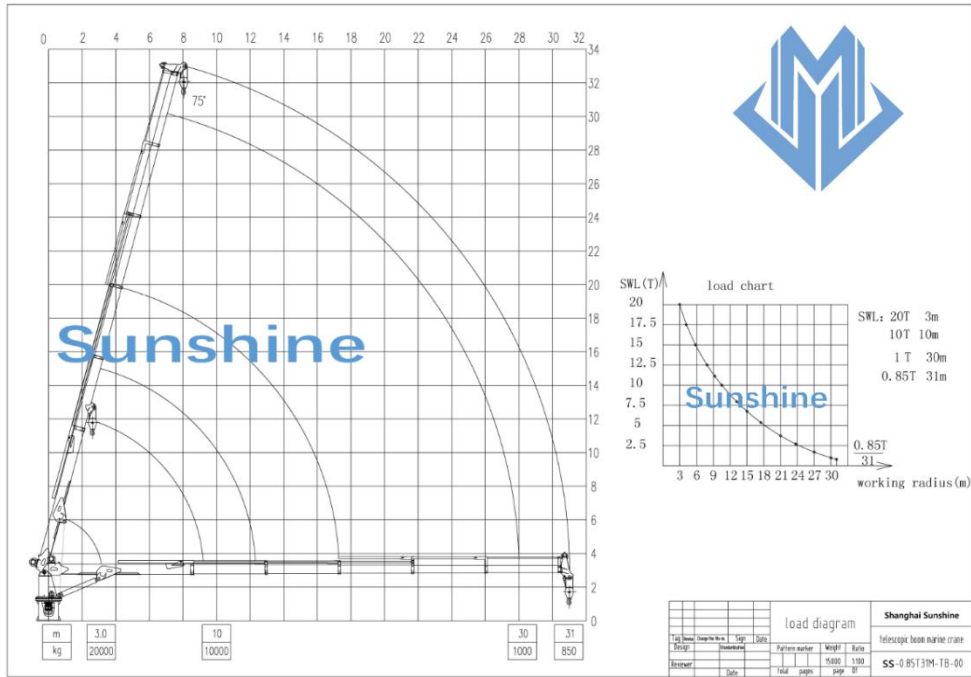
The telescopic box boom marine crane is supplied with a pedestal which should be welded onto the ship's steel structure or counter foundation. The pedestal consist of a rolled steel pipe and a flange on which the crane housing with its slewing ring is placed. The telescopic boom crane is designed as an electro-hydraulic driven telescopic boom crane, with integrated electro-hydraulic power package or independent electro-hydraulic power package, delivered as a complete unit ready for installation to foundation. The crane is equipped with hydraulic powered winch, hydraulic powered luffing, hydraulic powered extension and hydraulic powered slewing system.

Technical spifieccation

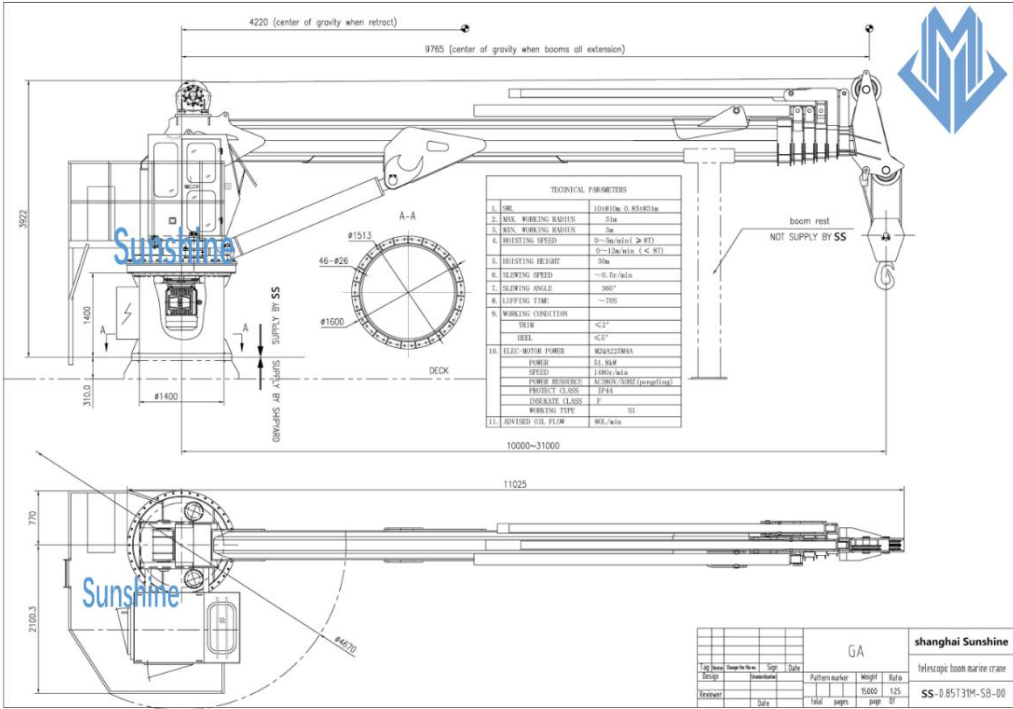
1	SWL	4t@30m
2	Max working radius	30m
3	Min working radius	3m
4	Hosting speed	0~12m/min
5	Slewing speed	0.6r/min
6	Slewing angle	360° free
7	Luffing time	75s
8	Hook travel	30m
9	DFT of painting	320um
10	Extension time	100s
11	Working condition	
	Heel	≤ 5°
	Trim	≤ 2°
12	Electric motor	
	Power	90Kw
	Speed	1480r/min
	Power source	440V 50Hz,
	Protect class	F
	Working type	S1

13	Flow	100L/min
14	Design temperature	-10°~40°
15	Dead weight	~26000 kg

Load chart



General drawing



GA		shanghai Sunshine	
Fig Name	Drawn Name	Scale	Date
Design	Drawn/Date	Pattern Author	Weight
Drawn	Date	Total pages	15/15
		SS-085131M-SB-00	